

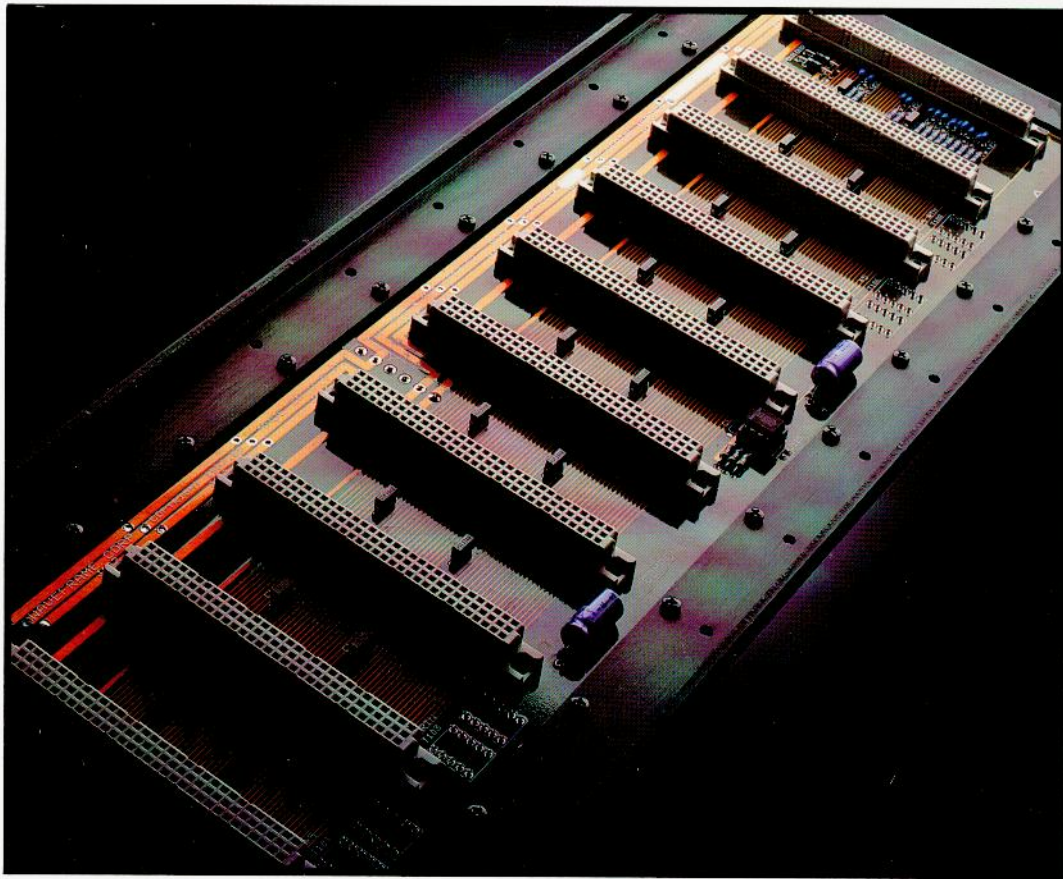


WaveFrame Corporation

**AudioFrame**

The Digital Audio Workstation

We're prepared to offer  
you something most companies  
would prefer to keep  
to themselves.



## Inside information.

To truly appreciate the AudioFrame™ Production System, you've got to get to know it from the inside out. Because the beauty of our integrated system really is more than skin deep.

Inside, you'll find an architecture that supports dramatic software and hardware features. So the AudioFrame delivers the productivity advantages you need to compete in today's demanding audio production business. And to make it even more attractive, we built in a foundation for growth that other systems just can't offer.

**Take the Digital Audio Bus™ to an integrated environment.** Staying in the digital domain is fundamental to preserving sonic quality and enhancing production efficiency. The integrated approach to digital audio production offers a clear advantage over more conventional techniques by cutting costs

and reducing the complexity of interfacing audio digitally. The Digital Audio Bus makes it all possible. Constant Rate Sampling™ disk recording, mixing and processing, can all be repeatedly performed without generation loss.

**A better system. By definition.** A high definition 24-bit system is long overdue. Digital audio must be processed at greater precision than the desired end result or signal degradation will occur.

The AudioFrame's Digital Audio Bus provides a 24-bit path for communications between modules. Signals on the bus are 20-bit from the sampler and 24-bit from the disk recording module, mixer/processor and digital I/O.

**Stretch your imagination.** AudioFrame's 16-voice Constant Rate Sampling module provides dramatic non-aliased transposition and phase coherent polyphonic performance. It allows sampled sounds to be internally mixed and processed digitally, eliminating tracking filters and analog combining networks inherent in other systems.

Transposition is accomplished by internally re-sampling at 23 MHz, where a powerful signal processing engine actually redraws the signals at the desired frequency. Over 14 octaves of transposition can be accomplished without aliasing, so you can preserve full bandwidth.

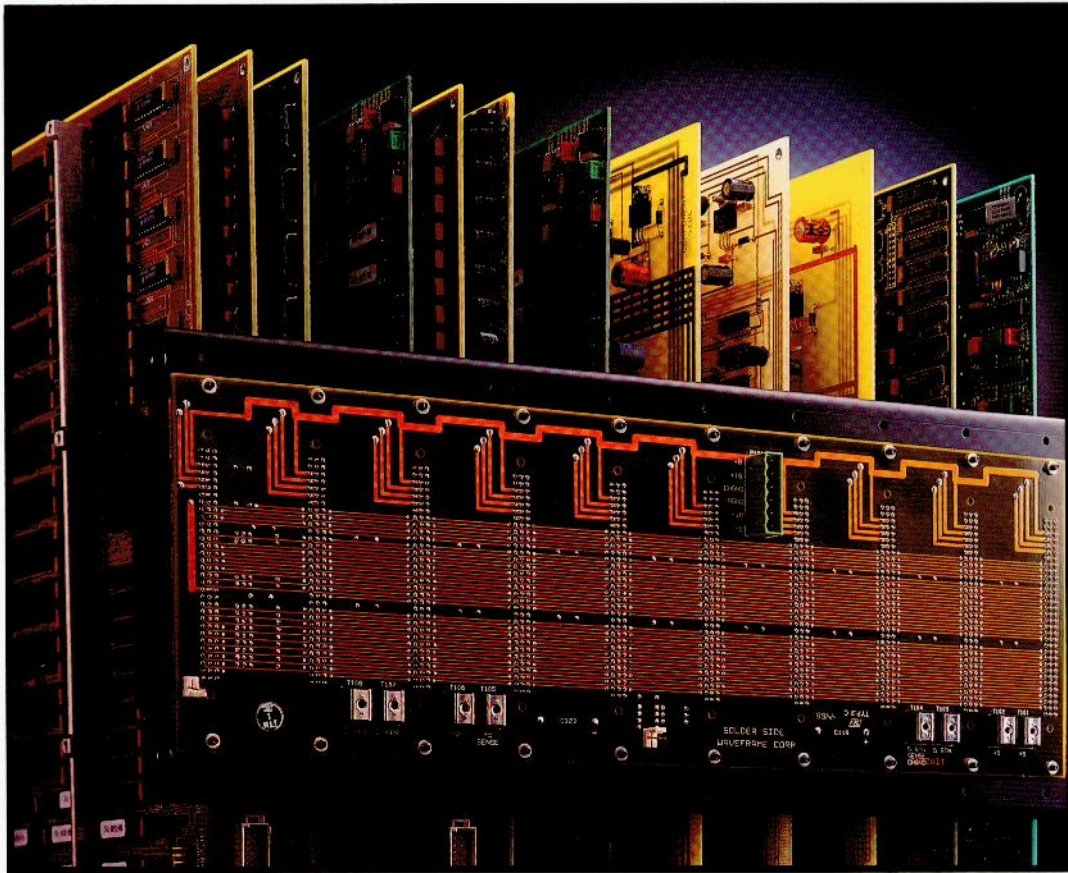
Up to 48 voices can be combined in a single AudioFrame rack with phase coherency. Want even more voices? Simply combine several racks. A dynamic allocation algorithm manages voices for you, so you don't have to pre-assign voices to a particular instrument sound. In addition to the 2 megabytes built into the sampling module, expansion modules of 6, 14 or 28 megabytes of RAM can be added.

**Keep your signals straight.** The Digital Signal Processing (DSP) module is a comprehensive 16 channel, 24-bit signal processing module. Its user configurable interface, called StudioCAD™ allows it to perform several different tasks or to store all control parameters for instant reset for any given project.

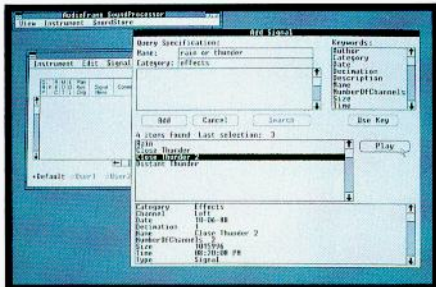
This module's topology includes 16 inputs with stereo mix, 16 parametric EQ sections, 4 Auxes, level and pan. The EQ is capable of 60dB cuts with Qs of up to 100. Plus all control operations are fully de-zipped and real-time. So you get analog feel with digital power. You also get a full feature 24-bit reverberation processor, and all control moves can be stored and re-performed via MIDI.

**We speak your languages.** I/O in the AudioFrame is accomplished through user specified combinations of analog converters and/or Universal Digital Interface (UDI) modules. The input converters are available in groups of 2 or 8 inputs, while output converters come in groups of 8.

AudioFrame's UDI module supports virtually all professional and consumer digital formats in use today. Mastering quality sample rate conversion allows digital audio signals between 30 kHz and 50 kHz to be brought onto our 44.1 kHz Digital Audio Bus. The UDI-4 will perform format conversion to and from all popular digital formats. Emphasis and de-emphasis is handled in the digital domain so that digital audio signals of different emphasis status may be brought onto the Digital Audio Bus and mixed together. The 24-bit path into the system and onto the AudioFrame's Digital Audio Bus assures compatibility with future digital audio recording.



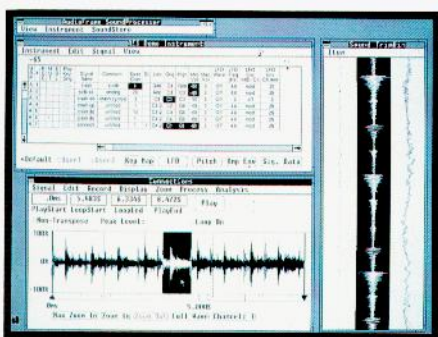
The Studio Control Processor module is the master communications interface for the Digital Audio Rack. It synchronizes all computer, time code and MIDI data between the 80386-based computer and the modules.



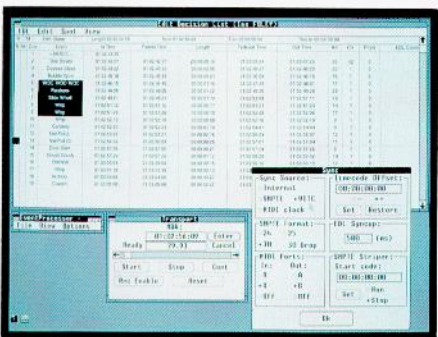
On-line sound storage and integrated database file management system.

**Gain access.** SoundStore™ is a high speed disk-based internal audio storage system that provides up to 1.8 gigabytes per frame. Featuring a powerful database, SoundStore's file management system gives you fast access to sound files on disk.

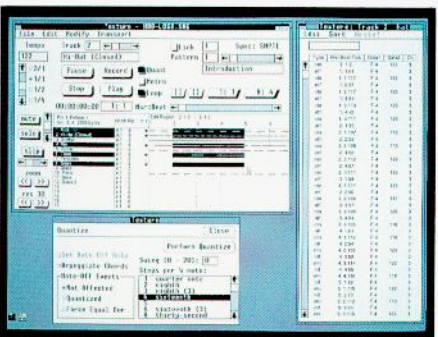
Sounds or groups of sounds are located by text description or user-definable key words and can be auditioned directly from the disk in stereo. SoundStore provides a completely flexible library management system, on-line.



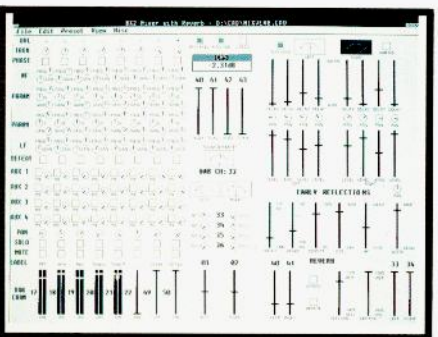
Cut, copy, paste, sound editing with SoundProcessor.



EventProcessor includes sub-frame accurate event scheduling.



Texture is the AudioFrame's full-function MIDI composition environment.



StudioCAD offers full function 16 x 2 mixing plus stereo reverb.

**A product that produces.** Because the AudioFrame puts all the right information right at your fingertips, you can focus on your work rather than on managing a collection of boxes. You get all you need to maintain quality from start to finish.

Like SoundProcessor™, our powerful editing program. Its broad capabilities give you comprehensive control over all parameters in an intuitive spreadsheet format. Amplitude envelopes are graphically addressed. Every sample in an instrument contains independent parameters for unmatched control over level, LFO, velocity and pitch envelope. Random access editing with cut, copy, paste and unparalleled scrub quality provides fast, creative editing that immediately gives you a host of options and is non-destructive to the original signal.

EventProcessor ties your production to time code with sub-frame accuracy. This Edit Decision List synchronizes directly to SMPTE/EBU longitudinal (LTC) or vertical (VITC) time code. Spot directly or use every nuance of your MIDI keyboard, from effect names and durations to levels and pitch offsets.

Texture™ is our graphic-based sequencer for MIDI-based composition. Linear or modular modes allow you to determine the best structure for your project. The program features 32, 16 channel tracks, as well as a multi-meter and programmable tempo conductor track.

Real-time controls allow you to change tracks during playback, record tracks in a loop or erase. You can edit either globally or note-by-note, all dynamically.

StudioCAD, the operator interface for DSP functions, proves that digital processing doesn't have to be an esoteric jumble of numbers and non-real-time operations. In fact, it's a full function digital mixing console, right on screen.

In addition to providing all the familiar controls, StudioCAD also offers real-time ballistics in metering. Why CAD? Because all controls can be arranged just the way you want to work with them. Settings can also be dynamically recorded to the MIDI sequencer, including real-time changes.

**Buy into a sound company.** When you buy the AudioFrame,



you're also buying years of experience in professional audio. Plus expertise in such diverse disciplines as engineering, marketing, sales, service and finance. Our team is composed of a carefully selected mixture from both the recording and computer industries. They'll work with you, providing solid service and support. So you not only get a sophisticated system, you get the insight to make it work for you.

We've developed a growing system of integrated tools that has the capability to grow substantially with software-only upgrades. The AudioFrame can also grow functionally without performance degradation, using cost effective hardware modules.

Over the years, we've determined the priorities for system growth by using some very sensitive equipment. Our ears. We listened to our users and channeled their input into our design. You'll discover that the resulting system is one that makes a significant contribution to the art and craft of sound production. Not just today, but into tomorrow as well.

Contact us at our corporate headquarters and we'll arrange a full demonstration via our worldwide sales and service network. Because hearing the AudioFrame in action is the best way to get the inside track.

WaveFrame Corporation

**AudioFrame**

5501 SCP



WaveFrame Corporation

**AudioFrame**

5203 UDI-4



DIGITAL I/O

PORT A

WaveFrame Corporation

**AudioFrame**

5101 ADC

WaveFrame Corporation

**AudioFrame**

5102 ADC

DISABLE  
ENABLE

WaveFrame Corporation

**AudioFrame**

5131 DAC

ON  
OFF DITHER



DIGITAL OUT

WaveFrame Corporation

**AudioFrame**

5901 SAMPLER

WaveFrame Corporation

**AudioFrame**

5711 MEMORY



2 1  
SCSI

WaveFrame Corporation

**AudioFrame**

5801 DSP

AUDIO INPUT

AUDIO OUTPUT



OUT

MIDI A



IN

MIDI A



OUT

MIDI B



IN

MIDI B



VIDEO IN

EXT CLK



CLINK OUT



TLINK OUT



LAN EXP



DIGITAL I/O

PORT B



AUDIO INPUT

2



1

**WaveFrame Corporation**

2511 55th St. Boulder CO 80301  
303-447-1572 FAX:303-447-2351  
Boulder Los Angeles New York Copenhagen



Copenhagen



OUT

CAUTION!  
FOR CONTINUED PROTECTION AGAINST THE RISK OF FIRE, REPLACE ONLY WITH SAME



Patina is a trademark of Magnolia Music